

JICSL 40TH ANNIVERSARY CELEBRATION PARTY AND KILLER QUEEN CONCERT

FREQUENTLY ASKED QUESTIONS

WHEN

SATURDAY, MARCH 21, 2020

- **NEW TIME:** Registration tables open at 5:00 pm
NO ENTRY WITHOUT A RESERVED TICKET.
- **NEW TIME:** Cocktails and Dinner begin at 5:30 pm
- Concert begins approximately 7:30 pm
- Tiffany Raffle approximately 9:45 pm
- Bars close at 10:15 pm

WHERE

PARTY & CONCERT WILL BE HELD ON THE NORTH SOUTH DRIVING RANGE

TRANSPORTATION

PLEASE CARPOOL IF POSSIBLE.

PARKING

PARKING LOTS

- will be clearly marked with shuttle service to the driving range.

VALET PARKING

- will be located in the J.I. Golf Club parking lot with shuttles to the driving range.

SPECIAL NEEDS

IS THERE TRANSPORTATION FOR THOSE NEEDING A LIFT ONTO THE DRIVING RANGE?

Yes! Golf carts will be available to ferry anyone who needs a ride directly onto the driving range. Please Valet Park if you need handicap assistance getting to the driving range.

HANDICAP ACCESS

IS THERE HANDICAP SEATING?

YES!

Please let us know if you need handicap assistance. Wheelchairs will be provided - please let Ashby

Longwell know if you need one. Golf Cart shuttles are available for anyone who needs a ride right onto the driving range.

REGISTRATION

HOW DO I GET MY CONCERT TICKETS?

- Tickets to concert will be distributed at 2 registration desks situated at the front entrances to Driving Range.
- All Concert Seats will be assigned.

RESERVATIONS

HOW DO I RSVP?

- Mail your RSVP card to Ashby Longwell, Concert Treasurer at 600 Indian Harbor Road, Vero Beach FL 32963 **OR**
RSVP on line at JIserviceleague.com

HOW DO I BECOME A VIP?

- VIP seating, priority parking and reserved dining tables are available when you RSVP.
- For VIP Ticket Holders, tickets and parking passes will be delivered to your home in advance of the day.
- See RSVP card or JICSL website for details
JIserviceleague.com

WHAT IF I HAVE HOUSEGUESTS?

JICSL Members are welcome to purchase tickets for guests. They must be accompanied by a J.I. Member and over the age of 14.

DINNER SEATING

WHERE IS DINNER?

- Dining is on the Driving Range.
- Seating for Dinner is Open Seating. Feel free to arrive early and save seats or a table. We will have plenty of tables and chairs for everyone.

CAN I RESERVE SEATS OR A TABLE FOR DINNER?

- VIP ticket holders will have a reserved table for dinner. Otherwise, dinner seating is open.

Continued on next page...

CONCERT SEATING

WILL I HAVE ASSIGNED SEATS FOR THE CONCERT?

- YES. All seats will be assigned by value of ticket and order of receipt.

WHO HAS "BRING YOUR OWN BLANKET" SEATING?

- KIDS AND YOUNG ADULTS ages 14 - 35.
Please bring your own blankets for Mosh Pit seating in front of the stage.

ADULT MEMBERS WILL HAVE A RESERVED SEAT.

- But... if you'd prefer to bring your own blanket for Mosh Pit open seating in front of stage, please do. We will still keep an assigned seat for you.

AGE RESTRICTIONS

AM I TOO OLD?

Never! If you are young at heart, you are never too old for the music of Queen. If you need special transportation, we will provide golf carts to get you to and from the driving range. We will have wheelchairs available for anyone who needs one.

Please let us know ahead of time if you will need handicap assistance!

AM I TOO YOUNG?

Sorry, the answer is yes if you are below the age of 14. This is a fundraising concert on a darkened driving range. It's not a place for young children.

IDENTIFICATION REQUIRED

If family members are between 21 and 35, these young adults must show a valid ID. We will use IPAD technology to ensure the ID is not a "fake".

NO ID - NO ALCOHOL

- You will be given a "below 21" sticker.

FAKE ID - NO ENTRANCE.

PARTY DETAILS

WHAT IS THE DRESS CODE? SNEAKERS!! PLEASE...

- and Jeans. Party and Concert are on the driving range!

CAN I WEAR A COSTUME?

- If you want to summon up your 1980's garb, go for it and have fun!
BUT PLEASE WEAR SNEAKERS ON THE DRIVING RANGE.

DINNER

WHAT'S FOR DINNER?

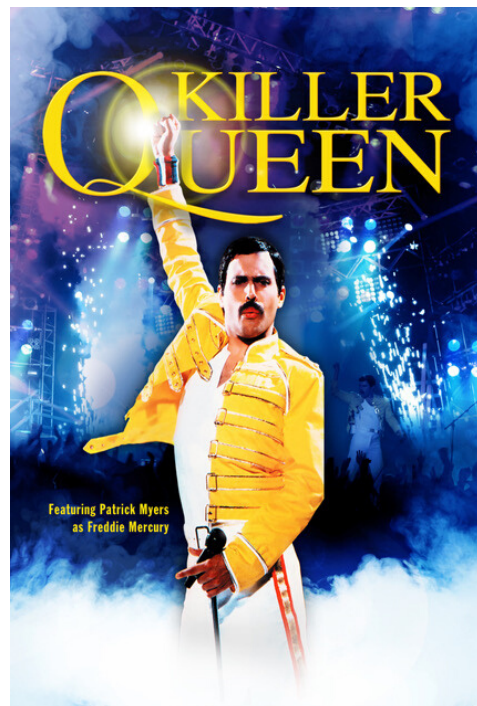
- Chef Farnsworth is whipping up an incredible feast - FIT FOR A QUEEN!

PARTY GAMES

JOIN THE FUN...

-- There will be lawn games like corn hole for ALL AGES to play.

CONCERT DETAILS



Continued on next page...

WHO IS KILLER QUEEN?

"Singer Patrick Myers is an absolute dead ringer for the legendary Freddie Mercury (both visually and vocally), resulting in a live concert experience that is second only to catching an '80s era Queen performance.

Killer Queen quickly became incredibly popular in their native England - resulting in a residency at London's Strand Theatre, winning "Worldwide Best Tribute Band" at an awards ceremony in Leicester Square, and performing stadium shows - including being selected to **represent Queen in a re-staged tribute Live Aid concert held by Sir Bob Geldof.**

And the accolades continue to pour in, including Duncan Kennedy of BBC 1 declaring "No detail is overlooked. Killer Queen are kings of the musical impersonators, the highest of tributes."

BBC Yorkshire's Kate Lock added, "Killer Queen rocked the crowd to the rafters at the York Music Showcase. The massive (15,000) crowd bounced, roared enthusiastically & punched the air on the terraces to Killer Queen's charismatic and uncannily accurate renditions of the Queen back catalogue... Freddie/Patrick, strutted for all the world as if it were Live Aid."

Get ready for a rocking good time, with Killer Queen!

WHAT TIME DOES THE MUSIC END?

- The band plays approximately 110 minutes. Concert should conclude around 9:45 pm. Please stick around for the Tiffany Raffle Drawing.

WHAT TIME DO THE BARS CLOSE?

- Approximately 10:15 pm

HOW DO I PICK UP MY LITTLE BLACK BOOK 2020?

- As you leave the concert, don't forget to pick up ice cream & your Little Black Book 40th Anniversary Edition.

TIFFANY RAFFLE

WHAT TIME WILL THE TIFFANY RAFFLE BE HELD?

- Approximately 9:45 pm - at the end of the Concert.
- Raffle Tickets will be sold until the start of concert at 7:30. Please purchase early at: Jlserviceleague.com.

HOW DO I PURCHASE TIFFANY RAFFLE TICKETS?

Your best bet is to purchase them with your invitation RSVP or ON LINE. We'll be selling tickets on the driving range before the concert, but the easiest way for you and for us is right now by mail or on line at Jlserviceleague.com!! Thanks.

Generously donated by
TIFFANY & Co.
Worth Avenue

Raffle Tickets are
\$100 each or 3 for \$250.



Raffle will be held at
Killer Queen Concert
March 21, 2020.

Brilliant beacons of optimism and hope, Tiffany Keys are radiant symbols of a bright future. This dazzling Petals pendant glows with diamonds, illuminating the face. Retail \$8500. 18" Platinum Chain included for total retail value of \$8950.

See response card to purchase raffle tickets in advance
or contact Andrea Thibodeau at thibfam@comcast.net

KALOS GOLF CRUISE

WHEN IS THE KALOS GOLF CRUISE ONLINE AUCTION?

- ONE WEEK BEFORE THE CONCERT - ON LINE BIDDING BEGINS MARCH 13TH AND ENDS 5 PM MARCH 20TH. THE PRIZE? 2021 TRIP OF A LIFETIME ALONG THE SPANISH COAST.
- THE WINNER WILL BE ANNOUNCED AT CONCERT.

WHEN IS THE KALOS TRIP? MAY 2021!!

- OVER A YEAR FROM NOW - PLENTY OF TIME TO PACK!!

THE JICSL - 1980-2020

WHAT IS THE JOHN'S ISLAND COMMUNITY SERVICE LEAGUE?

The John's Island Community Service League is a non-profit, member driven organization primarily involved in raising funds for operating expenses of charitable agencies in Indian River County concerned with the health, education, and human services issues that affect women, children and families in need. Only organizations that do not discriminate on the basis of race, religion or ethnicity will be considered. Scholarship support for post-secondary education is also provided to John's Island Employees and their children.

WHAT ARE WE CELEBRATING?

We are celebrating the 40th Anniversary of the John's Island Community Service League. In 1980 the rock band QUEEN was at

Continued on Next Page

the height of its popularity. Their amazing song 'We Are the Champions' sums up the work of the JICSL and the people we serve. You JICSL members are the real heroes.

WHAT IF IT RAINS?

We are thinking sunny thoughts! But...if rain is forecast, we will make the call a few days before to move the concert to the Beach Club. Please check your emails, J.I. Club website and JIserviceleague.com for details if it looks like rain.

KILLER QUEEN | 3.21.20 | NORTH SOUTH DRIVING RANGE

Dear Friends. This is a preliminary rendering of concert site subject to change. Thank you for your support!

